



Back System

MX
Series

MX Series



Specification

Dimension : 600/800mm Wide
1100/1200mm Deep
42U, 45U, 47U, 52U Height

Frameworks : Max. Static Loading Capacity : 1500 Kg

Vertical Channels : Full Deep EIA310-D 19" Panel Mounting
Channel with Unit-mark (2 pairs)
Extra-wide Channel (Rear) can housing
2 x Power Strip per side

Cable Management : Vertical Cable-Management Channel
with Cable Rings or Brush Strip
Vertical Cable Tray x 4 pcs

Front Door : Fully Perforated Steel Front Door
(73% +/- 5% Perforation Rated Pattern with
Hexangular-Hole)

Rear Door : Double Fully Perforated Steel Rear Door
(73% +/- 5% Perforation Rated Pattern with
Hexangular-Hole)

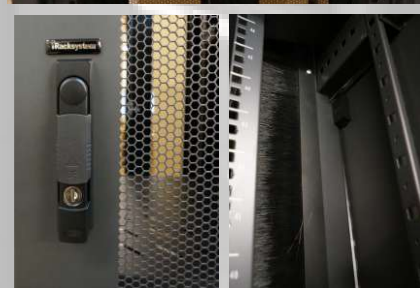
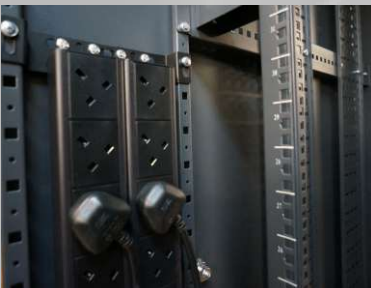
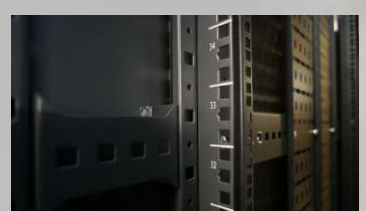
Locks : Handle Lock with Auto-Lock Feature (F/R)

Side Door : Lockable Quick Release Side Panel (in pairs)

Top : Vented Top with Cable Entry and Brush Strip Cover

Bottom : with 4 x Large Size Leveling Feet
with 4 x Heavy Duty Castors

Other Accessories : Fixed Shelves, Power Strip, Cable Ring,
Earthing Strip, Earthing Bar...etc



iRacksystem