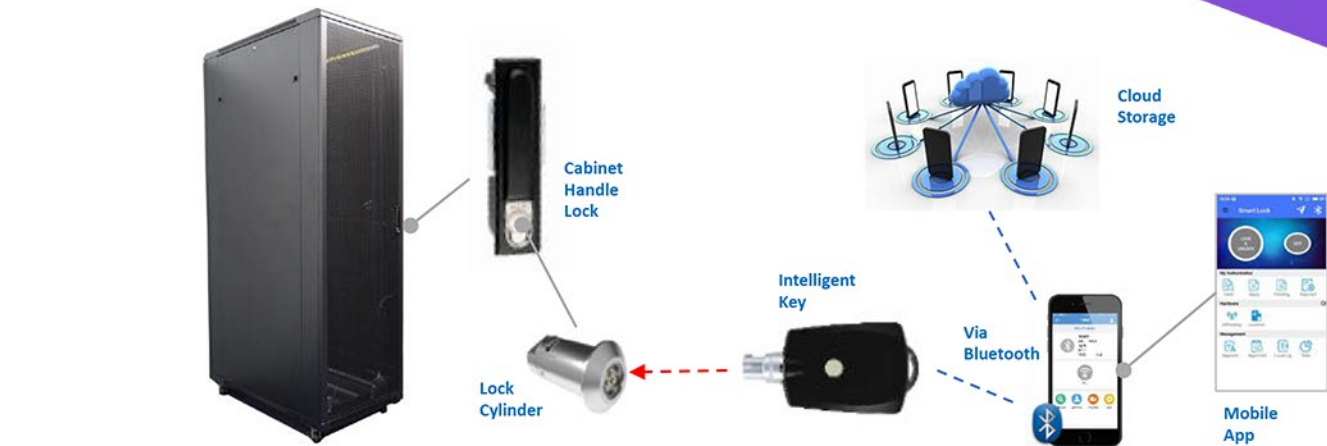


ONE KEY TO MANY LOCK CONTROL SYSTEM



XSMARTLOCK

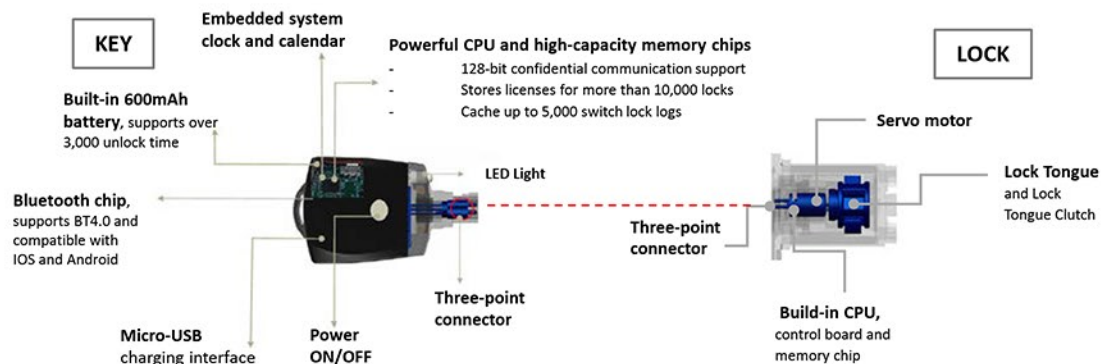
New Generation Locking System



IDEA DATA CENTER SECURITY CABINET ACCESS CONTROL

- > **No** Power, **No** Batteries required on the lock
- > **No** Wiring
- > **No** Network communication cabling
- > **One** Key to many lock

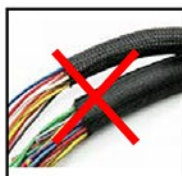
Intelligent Key & Lock Structure Diagram



General Features Includes



One Key to Many



No Wiring



No power /
battery on Lock



Mobile App
authorization to Key Via
Bluetooth



Cloud Storage
available, Remote
authorization,
Centralized control



Provide detailed
logging record

INaX
Technology Limited

INAX Technology Limited

Rm.J-K, 3/F., North Tower, Kwai Shun Industrial Center, 51-63 Container Port Road, Kwai Chung, N.T. Hong Kong
香港葵涌貨櫃碼頭路51-63號葵順工業中心北座3樓J-K室

Tel: +852 3427 8306

Fax: +852 3427 8313

www.inaxtech.com

eshop.inaxtech.com

INAX Technology Limited

INAXTechLtd

SI-TAB-BSK

Bluetooth Smart Key:

- BT 4.2 support BR/EDR and BLE
- Rechargeable Lithium Battery with 600mAh > 3000 times unlock
- Powerful CPU & Memory Chip with 128bits encryption
- Triple-points Smart Key connector for power and data
- LED Indicate and Buzz



SI-TAB-SCL

Dual-Model Smart Cabinet Lock:

- Two control channels for smart key and Supervision Unit Device via DO/DI
- Triple-points Smart Key connector for power and data
- RC4 128bits encryption of Smart Key channel
- Working Temperature -40°C~65°C



SI-TAB-PSP

Passive Smart Padlock:

- Zinc body for maximum durability support IP65
- Triple-points Smart Key connector for power and data
- RC4 128bits encryption of Smart Key channel
- Working Temperature -30°C~65°C

SI-TAB-MDL

Dual-Model Smart Mortise Door Lock:

- Two control channels for smart key and Supervision Unit Device via DO/DI
- Triple-points Smart Key connector for power and data
- RC4 128bits encryption of Smart Key channel
- Working Temperature -40°C~65°C



SI-TAB-MML

Dual-Model Smart Mortise Main Lock:

- Two control channels for smart key and Supervision Unit Device via DO/DI
- Triple-points Smart Key connector for power and data
- RC4 128bits encryption of Smart Key channel
- Working Temperature -40°C~65°C



SI-TAB-THLN

Passive Smart T-Handle lock for vending machine (New Installation):

- Zinc body
- Passive smart lock and power by Smart Key
- Triple-points Smart Key connector for power and data
- RC4 128bits encryption
- Working Temperature -40°C~65°C



SI-TAB-THLR

Passive Smart T-Handle lock for vending machine (Core replacement):

- Passive smart lock, power by Smart Key
- Triple-points Smart Key connector for power and data
- RC4 128bits encryption
- Working Temperature -40°C~65°C

SI-TAB-JTLN

Passive Smart Japanese-type lock for vending machine (New Installation):

- Zinc body
- Passive smart lock and power by Smart Key
- Triple-points Smart Key connector for power and data
- RC4 128bits encryption
- Working Temperature -40°C~65°C



SI-TAB-JTLR

Passive Smart Japanese-type lock for vending machine (Core replacement):

- Passive smart lock and power by Smart Key
- Triple-points Smart Key connector for power and data
- RC4 128bits encryption
- Working Temperature -40°C~65°C

